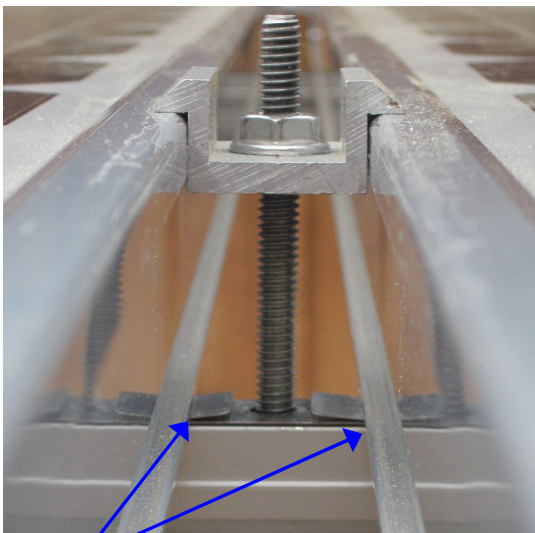


Code Compliant WEEB[®] Washers for Bonding and Grounding

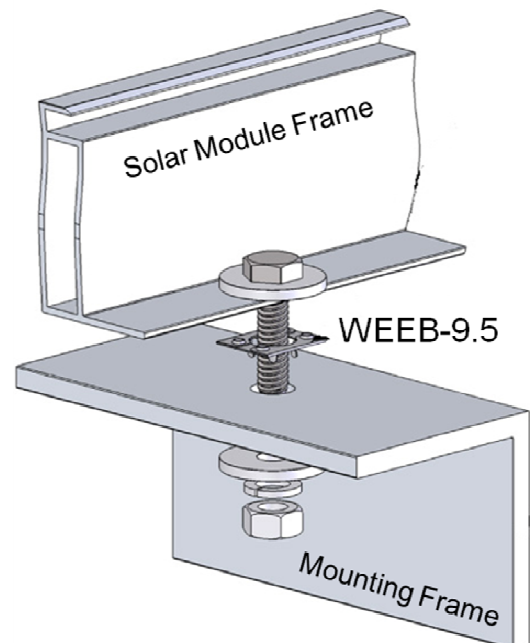
WEEB[®] stands for "**W**asher, **E**lectrical **E**quipment **B**ond". The WEEB[®] washers are used to easily bond PV modules onto metal mounting structures to simplify the grounding of the PV array in accordance with the NEC. The WEEB[®] washer is a low cost solution that provides a low impedance, electrical connection between a PV module frame and its mounting means. When the mounting structure is grounded, the PV module frame is also grounded in a consistent and reliable manner that will save time and money.

Features and Benefits:

- 304 Stainless Steel
- Corrosion resistant
- UL 467 Listed as Grounding and Bonding Equipment
- UL Subject 2703 Recognized
- Specialized teeth on washer embeds into anodized aluminum to establish gas-tight electrical connection
- Detailed instruction manual specifying proper hardware, torque and mounting details
- Meets NEC guidelines and requirements:
 - 100-1 Connector, Pressure (Solderless) – A device that establishes a connection between two or more conductors... by means of mechanical pressure and without the use of solder.
 - 250.8 (A)(3) indicates one of the permitted methods for equipment grounding is Pressure Connectors listed as grounding and bonding equipment.
 - 250.118 allows aluminum busbars of any shape, e.g., aluminum mounting rail, to be used as an equipment grounding conductor.
 - 250.136(A) permits the equipment to be grounded via its mechanical attachment to a rack that is grounded through one or more connections to an equipment grounding conductor or equipment bonding conductor.
 - 690.43 (C) states "Devices listed and identified for grounding the metallic frames of PV modules or other equipment shall be permitted to **bond** the exposed metal surfaces or other equipment to mounting structures".



WEEB[®] washer bonds PV module frames to mounting rail



BURNDY Installation Manual examples...

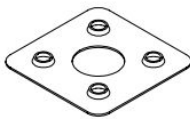


Washer, Electrical Equipment Bond

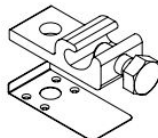
WEEB

INSTALLATION INSTRUCTIONS For ISYS Roof Mount (IRM), Ground Mount Steel (GMS), and Ground Mount Tracker (GMT) Systems Only

Burndy LLC recommends that the sufficient details of the installation be submitted to the AHJ for approval before any work is started.



WEEB-UIR



WEEB-LUG-6.7



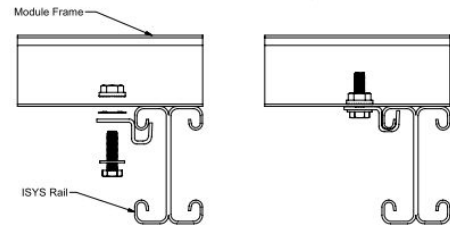
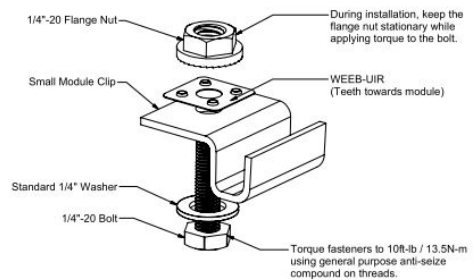
Products are tested to UL-467, CAN/CSA-C22.2 No. 41 US/ Canadian standards for safety grounding and bonding equipment.



Document Number 50015269 Rev E
© 2013 BURNDY LLC.
Page 1 of 11



WEEB-UIR ASSEMBLY For ISYS I-Beam and Channel Beam



Pre-Assembled

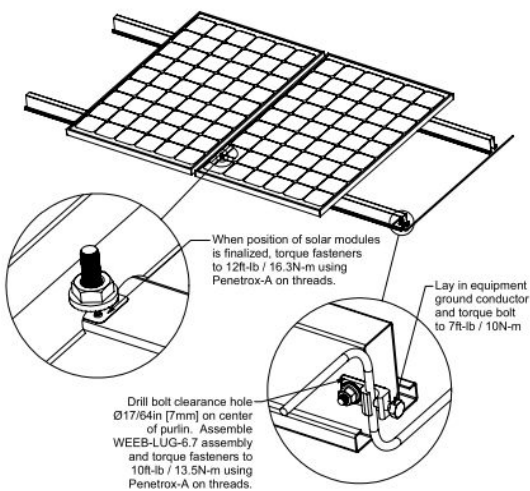
Assembled



Document Number 50015269 Rev E
© 2013 BURNDY LLC.
Page 6 of 11



SYSTEM OVERVIEW Unirac ISYS Ground Mount Steel and Ground Mount Tracker Hat Channel



Important notes:

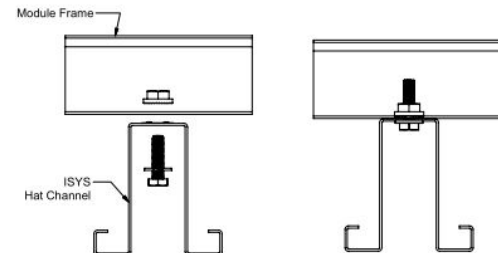
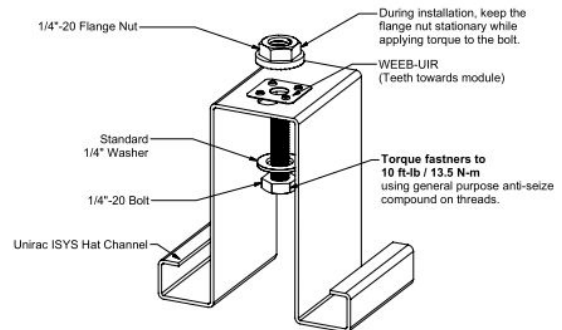
1. Use general purpose anti-seize compound on fastener threads when installing WEEBs.
2. The NEC section 690.43 states "Exposed non-current carrying metal parts of module frames, equipment, and conductor enclosures shall be grounded in accordance with 250.134 or 250.136(A) regardless of voltage".
3. WEEBs are intended for SINGLE USE ONLY. Functionality will not be guaranteed if reused.



Document Number 50015269 Rev E
© 2013 BURNDY LLC.
Page 8 of 11



WEEB-UIR ASSEMBLY For ISYS Hat Channel Only



Pre-Assembled

Assembled



Document Number 50015269 Rev E
© 2013 BURNDY LLC.
Page 10 of 11

