

# Grounding Lugs



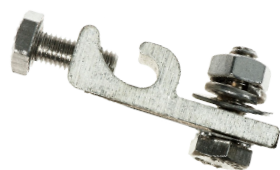
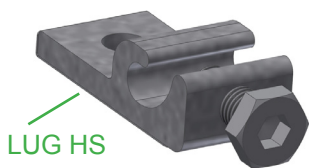
Constructed of corrosion resistant, tin-plated copper, the Wiley line of grounding lugs are high quality solutions for your solar PV system. The tin-plated lug assures minimum contact resistance and protection against corrosion. The low profile of the grounding lug allows it to be installed in a variety of positions with one solid or stranded copper wire (14 AWG to 6 AWG), or two copper wires (12 AWG to 10 AWG). Copper wire is secured by a 1/4-28 stainless steel screw, which is horizontal to the tang. This allows for easy access when mounted under a PV module. The result is a continuous ground on all solar applications.

## WEEB® Grounding Lug

The WEEB® Grounding Lug is installed using stainless steel mounting hardware. When the hardware is tightened, the WEEB® washer's specialized teeth embed into anodized aluminum or any electrically conductive metal to establish a gas tight electrical connection.

ITEM #	CATALOG #	LENGTH In. [mm]	WIDTH In. [mm]	HEIGHT In. [mm]	HOLE SIZE In. [mm]	MOUNTING HARDWARE	ASSEMBLED	TORQUE
30020109	WEEB-LUG-6.7	1.575 [40.00]	0.709 [18.00]	0.472 [12.00]	0.266 [6.76]	1/4 inch hardware included	N	7 ft lbs for terminal screw, 10ft lbs for mounting hardware w/ Penetrox-A on threads
50045236	WEEB-LUG-6.7HS							
30020110	WEEB-LUG-6.7AS	1.575 [40.00]	0.709 [18.00]	0.472 [12.00]	0.266 [6.76]	1/4 inch hardware included	Y	7 ft lbs for terminal screw, 10ft lbs for mounting hardware w/ Penetrox-A on threads
50046747	WEEB-LUG-6.7ASHS							
30020111	WEEB-LUG-8.0	1.575 [40.00]	0.866 [22.00]	0.472 [12.00]	0.323 [8.20]	M8 or 5/16 inch hardware not included	N	7 ft lbs for terminal screw, 10ft lbs for mounting hardware w/ Penetrox-A on threads
50046750	WEEB-LUG-8.0HS							
50010335	WEEB-LUG-8.0AS	1.575 [40.00]	0.866 [22.00]	0.472 [12.00]	0.323 [8.20]	5/16 inch hardware included	Y	7 ft lbs for terminal screw, 10ft lbs for mounting hardware w/ Penetrox-A on threads
50046753	WEEB-LUG-8.0UNHS							
50023920	WEEB-LUG-8.0UN	1.575 [40.00]	0.866 [22.00]	0.472 [12.00]	0.323 [8.20]	5/16 inch hardware included	N	7 ft lbs for terminal screw, 10ft lbs for mounting hardware w/ Penetrox-A on threads
50046756	WEEB-LUG-8.0ASHS							
30020112	WEEB-LUG-15.8	1.575 [40.00]	0.709 [18.00]	0.472 [12.00]	0.323 [8.20]	M8 or 5/16 inch hardware not included	N	7 ft lbs for terminal screw, 10ft lbs for mounting hardware w/ Penetrox-A on threads
50046759	WEEB-LUG-15.8HS							
50021995	WEEB-LUG-8.2	1.575 [40.00]	0.709 [18.00]	0.472 [12.00]	0.323 [8.20]	M8 or 5/16 inch hardware not included	N	7 ft lbs for terminal screw, 10ft lbs for mounting hardware w/ Penetrox-A on threads
50046762	WEEB-LUG-8.2HS							

\*HS = HEX SOCKET CAP TERMINAL SCREW



Intertek  
4004188

- Made of corrosion-resistant, tin-plate copper
- No surface preparation on rail or module required
- Reliability throughout the lifetime of the PV system
- Multiple equipment ground conductor allowance:
  - One 14 AWG to 6 AWG or two 10 AWG, two 12 AWG
  - UL2703 Listed
  - Listed to ANSI/UL 467 by Intertek ETL
  - CSA Certified to C22.2 No. 41

Customer Service 1-800-346-4175 | International 603-647-5299 | Canada 1-800-387-6487 | [www.burndy.com](http://www.burndy.com)



Connecting Power to Your World®



# Grounding Lugs

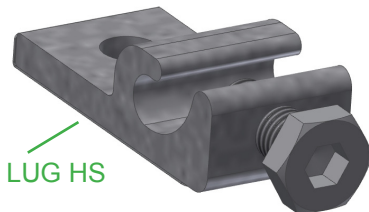


## WILEY Grounding Lug

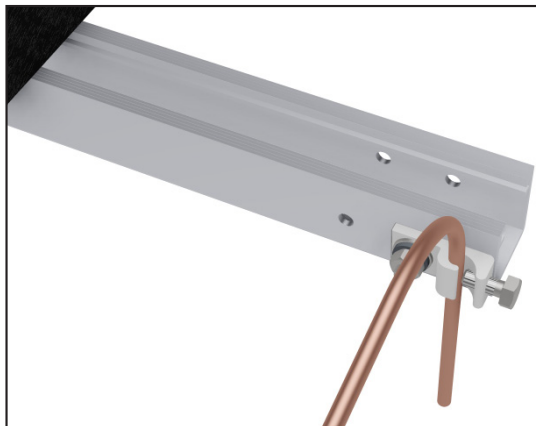
The Wiley Grounding Lug is available unassembled, without installation hardware, and with standard hole sizes of 1/4" and 5/16" (M8). Perfect for galvanized steel applications or anywhere a WEEB® washer is not required.

ITEM #	CATALOG #	LENGTH In. [mm]	WIDTH In. [mm]	HEIGHT In. [mm]	HOLE SIZE In. [mm]	HARDWARE	ASSEM- BLED	TORQUE
50028861	WILEYLUG6.7	1.575 [40.00]	0.709 [18.00]	0.472 [12.00]	0.266 [6.76]	1/4 inch hardware not included	N	7 ft lbs for terminal screw
50046765	WILEYLUG6.7HS							
50028866	WILEYLUG8.0	1.575 [40.00]	0.866 [22.00]	0.472 [12.00]	0.323 [8.20]	M8 or 5/16 inch hardware not included	N	7 ft lbs for terminal screw
50046768	WILEYLUG8.0HS							
50028869	WILEYLUG8.2	1.575 [40.00]	0.709 [18.00]	0.472 [12.00]	0.472 [12.00]	M8 or 5/16 inch hardware not included	N	7 ft lbs for terminal screw
50046771	WILEYLUG8.2HS							
50028872	WILEYLUG15.8	1.575 [40.00]	0.709 [18.00]	0.472 [12.00]	0.323 [8.20]	M8 or 5/16 inch hardware not included	N	7 ft lbs for terminal screw
50046774	WILEYLUG15.8HS							

\*HS = HEX SOCKET CAP TERMINAL SCREW



- Material: tin-plated copper
- Outdoor rated
- Low profile design
- Perfect for galvanized steel applications or anywhere a WEEB® washer is not required
- Multiple equipment ground conductor allowance:  
One 14 AWG to 6 AWG or two 10 AWG, two 12 AWG
- Listed to ANSI/UL 467 by Intertek ETL



Customer Service 1-800-346-4175 | International 603-647-5299 | Canada 1-800-387-6487 | [www.burndy.com](http://www.burndy.com)



Connecting Power to Your World®

