

Wiley Electronics LLC Washer, Electrical Equipment Bonding (WEEB)

The WEEB is a new patent pending device for bonding PV modules to a mounting structure. The WEEB is designed to provide a reliable electrical connection with anodized aluminum pieces. In use, the WEEB is inserted between the PV module and mount at one of the four attachment points. The module and mount are then bolted or clamped together in the usual manner.

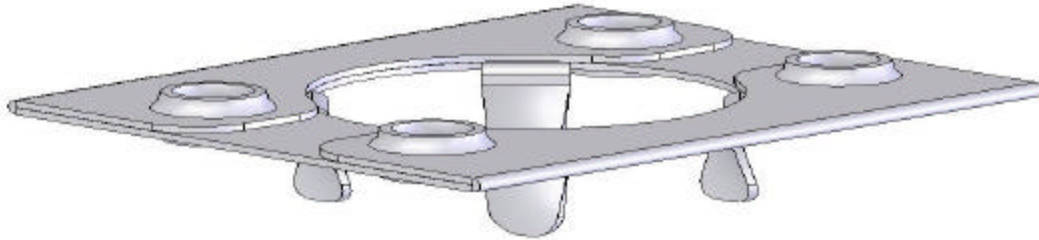


Figure 1. WEEB-9.5

Assembly:

Press one WEEB-9.5 into two of the four 9.5mm (3/8 inch) holes in the mounting structure. The retaining fingers will keep the WEEBs from falling out while the PV module is aligned to the mount. Each of the two WEEB-9.5s should contact a different mounting member. Insert 1/4-28 bolts and tighten until the dimples are completely embedded and the two aluminum pieces flat against the body of the WEEB. The embedded dimples will make a gas-tight mechanical connection and thus ensure good electrical connection.

material: 304 stainless steel

UL467 listed

maximum electrical equipment ground conductor size when used with 2 WEEBs in an assembly: 6 AWG

outdoor rated

model number:	WEEB-9.5	for 1/4 inch bolted connections
	WEEB-9.5NL	without retaining fingers, 3/8 inch bolted connections