



## Washer, Electrical Equipment Bond

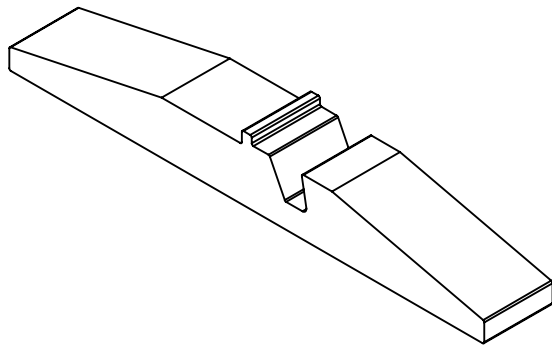
# WEEB

Patent Pending

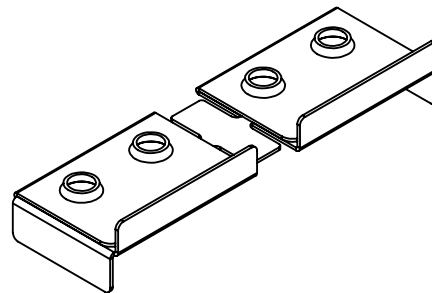
## INSTALLATION INSTRUCTIONS

# *For Conergy Solar Giant Only*

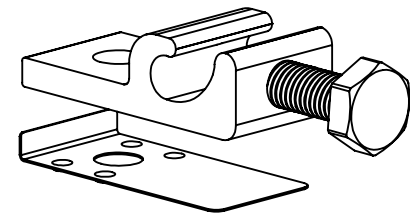
Please read carefully before installing.



**Double Wedge**



**WEEB-CSG**



**WEEBLug-6.7 assembly**

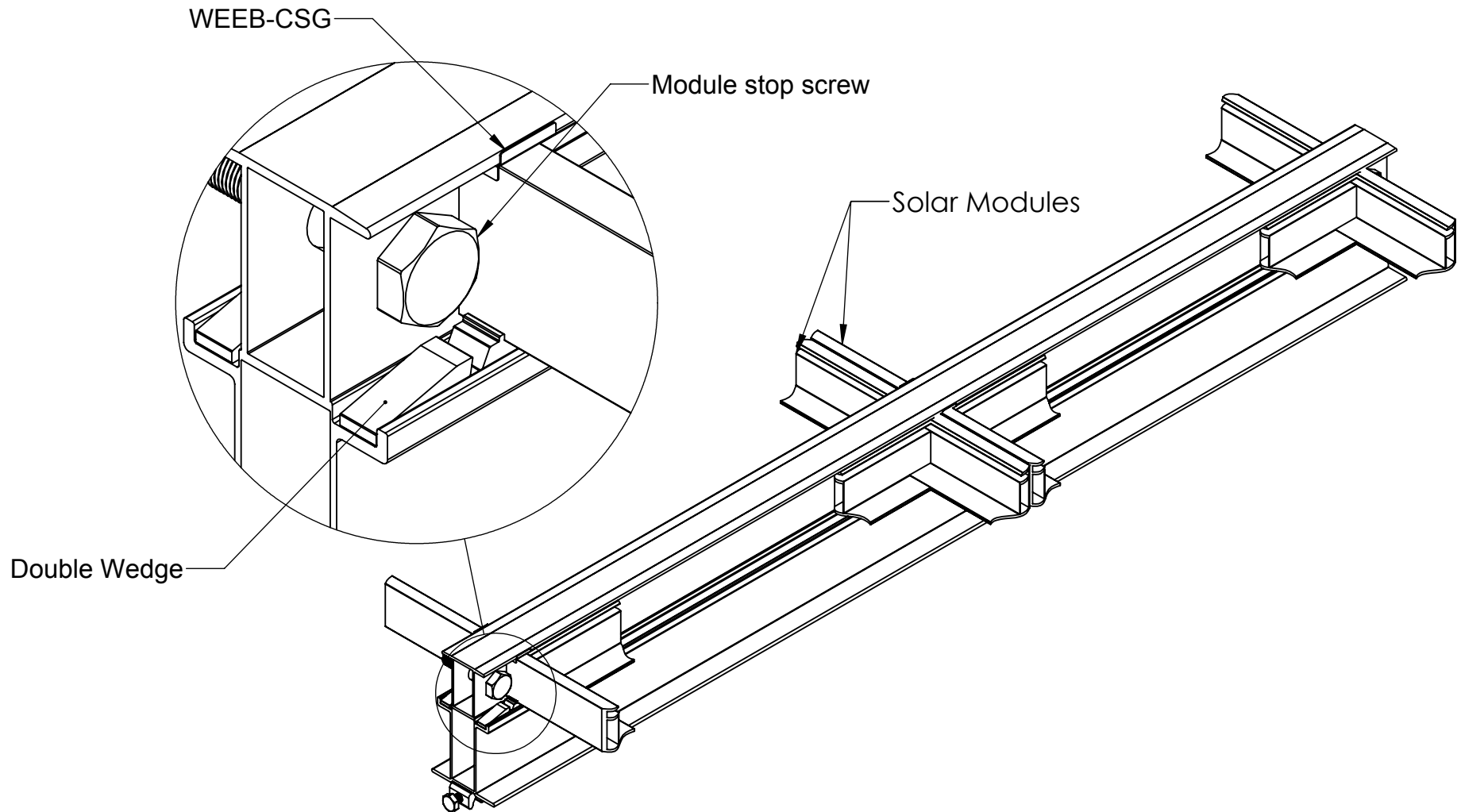
Products are tested to UL 467  
UL standard for safety grounding and bonding equipment

Document Number 104-0404-000037-002

Wiley Electronics LLC. 2006-2010© – All Rights Reserved



# WEEB-CSG AND DOUBLE WEDGE OVERVIEW



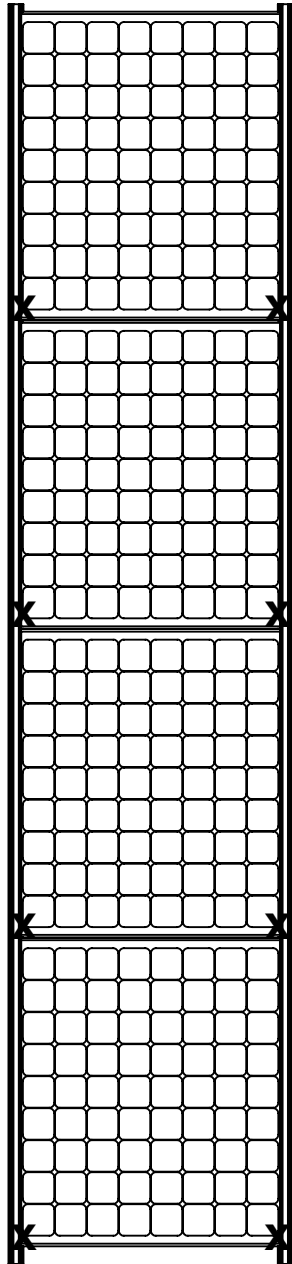
## Important Notes

1. Inspect each module frame used with a WEEB to ensure that the top mounting face of the frame is flat, and that there are no hinderances to embedding WEEB teeth. Do not use a module with a frame that prevents the WEEB teeth from embedding fully.
2. Additional tools required:
  - Piece of aluminum or similar non-marring material (for installing wedge)

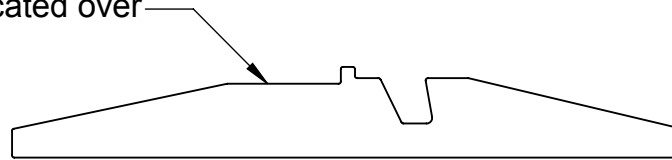
# WEEB-CSG Layout

**X** DENOTES PLACES TO INSTALL WEEB-CSG

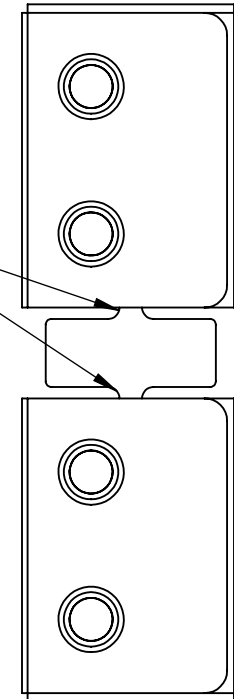
ONE WHOLE WEEB-CSG (TWO SECTIONS)  
PER SOLAR MODULE



Insert wedge so that  
WEEB is located over  
this face.



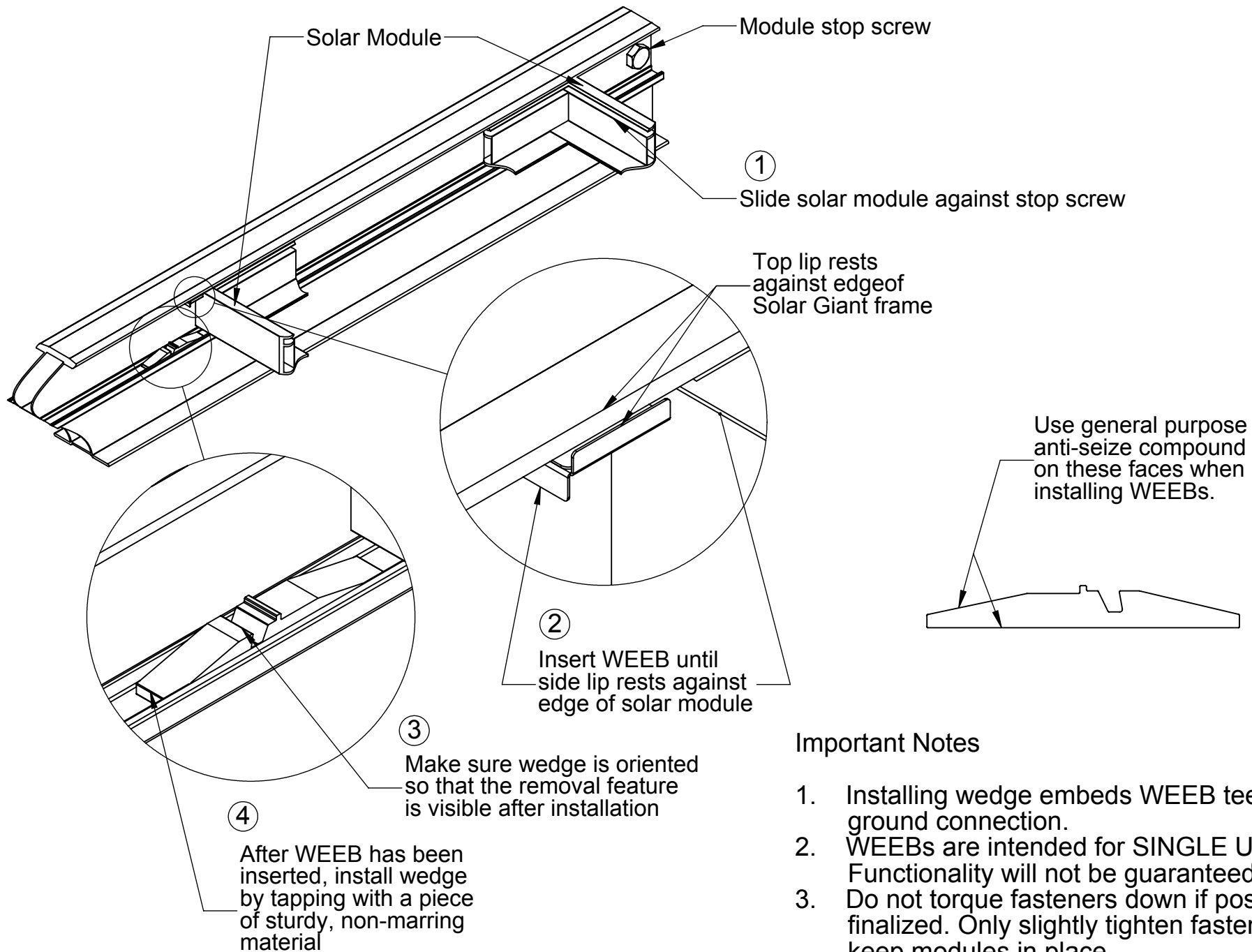
Split WEEB-CSG  
into two sections.  
Use one section  
on one corner of  
a module.



Note:

When replacing a single faulty module, also remove the adjacent module which contacts the same WEEBs as the faulty module. This will ensure that there are never ungrounded modules in the array.

# INSTALLING WEEB AND WEDGE



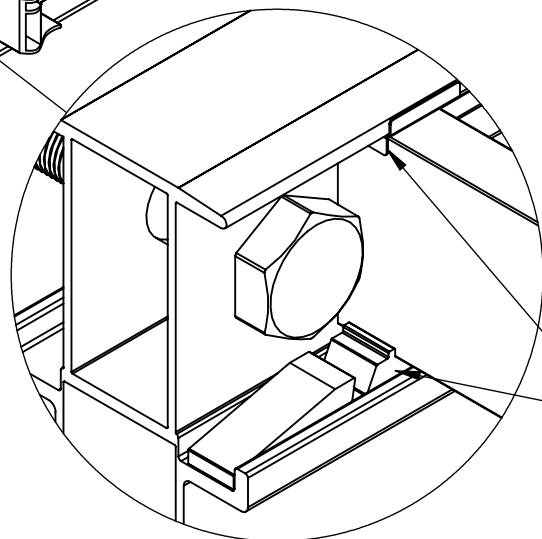
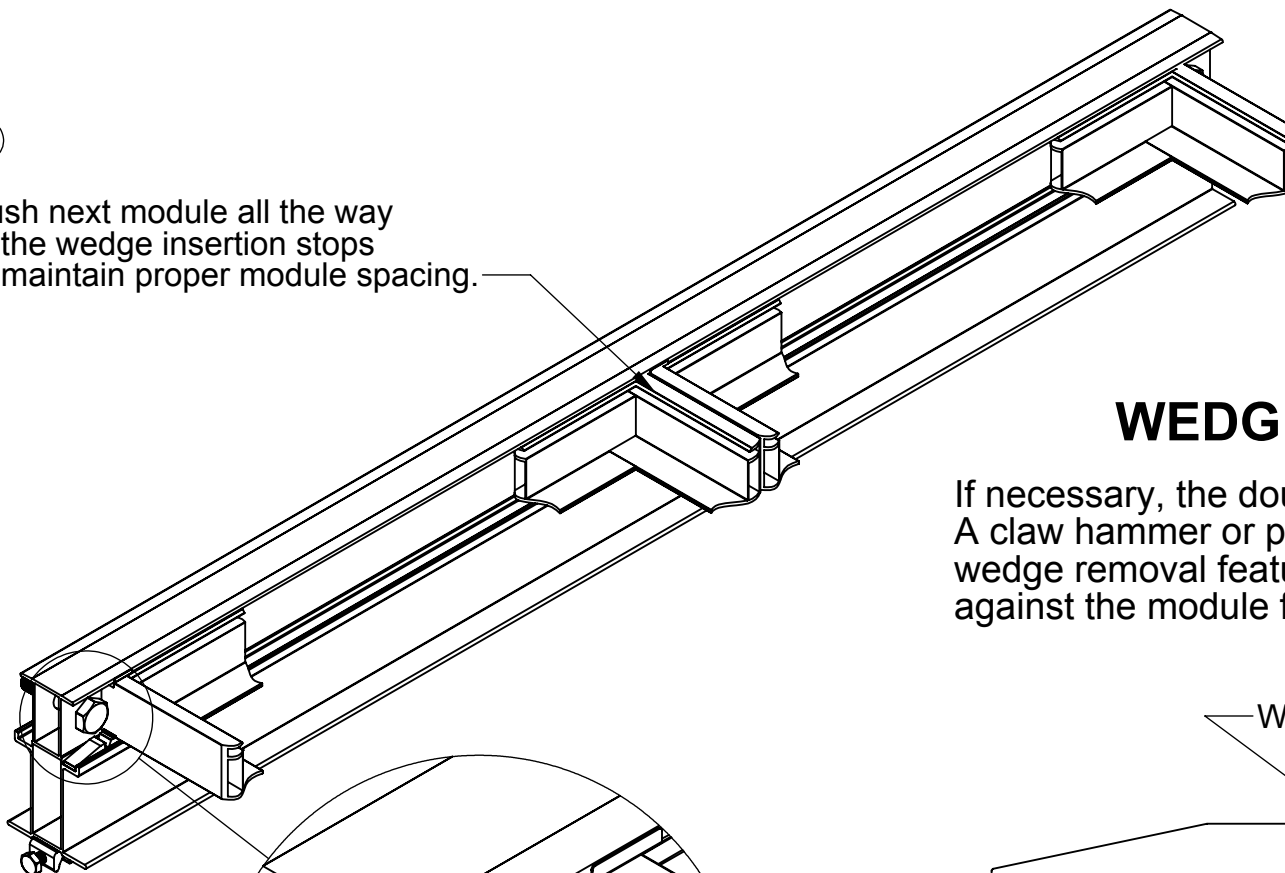
## Important Notes

1. Installing wedge embeds WEEB teeth forming ground connection.
2. WEEBs are intended for SINGLE USE ONLY. Functionality will not be guaranteed if reused.
3. Do not torque fasteners down if position is not finalized. Only slightly tighten fasteners to keep modules in place.

# SECURING MODULES

⑤

Push next module all the way to the wedge insertion stops to maintain proper module spacing.



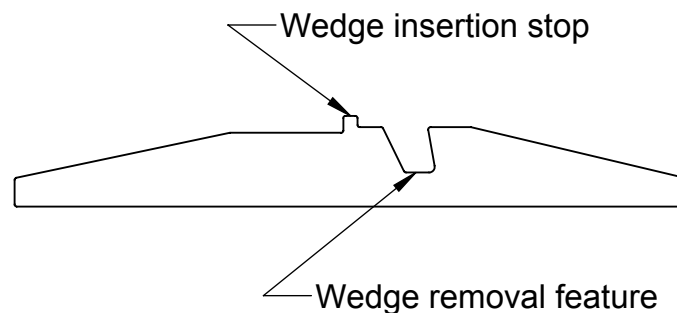
Wedge and module stop screw retains modules

⑥

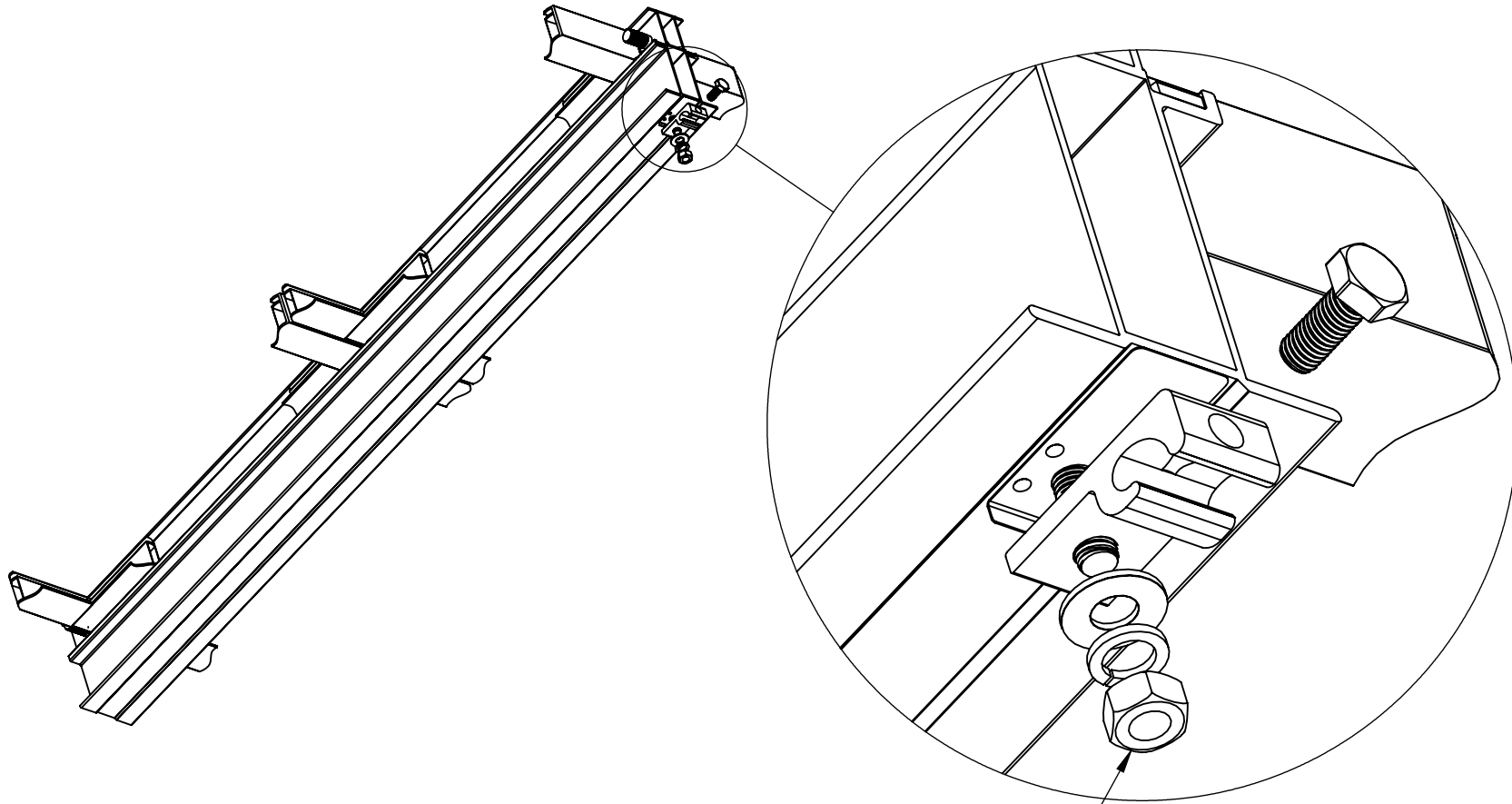
Install WEEB-CSG and double wedge on two corners of every module. Both WEEBs on a module must contact different mounting rails.

## WEDGE REMOVAL

If necessary, the double wedge can be removed. A claw hammer or pry bar can be inserted into the wedge removal feature and used to gently pry against the module frame to remove the wedge.



# WEEBLUG ASSEMBLY



Assemble WEEBLug-6.7 assembly and tighten fasteners to 10ft-lb / 13.5 N-m, using general purpose anti-seize on threads.

Important note:  
WEEB-6.7 that sits under the WEEBLug is for SINGLE USE ONLY!  
Ensure position is correct before tightening.

